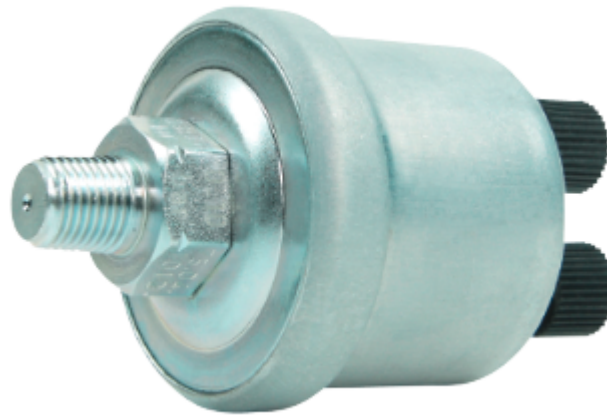




SENSORS: Pressure sensor



Pressure sensor

Pressure sensors are used in vehicles and machines to record the pressure of oil or air and to forward the measurement result to a pressure display.

MOTOMETER pressure sensors are available in pressure ranges of between 0 bar to 25 bar. The pressure sensor is screwed in; the prevailing pressure changes a mechanically influenced potentiometer integrated in the housing.

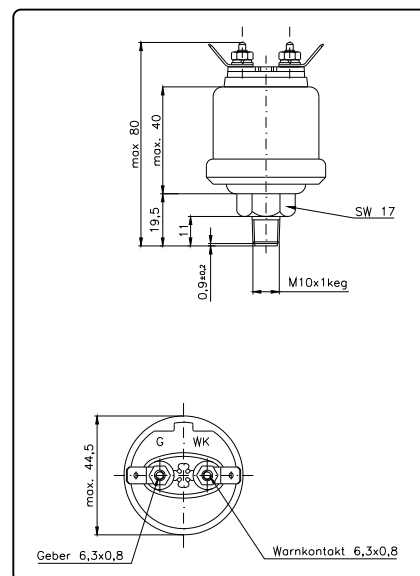
Operation is possible with 12 Volt or 24 on-board supply system. The sensors are available in 1-pin grounded, off-earthed as well as grounded with warning contact.

Compatible with MOTOMETER pressure displays

644 001 xxxx

644 060 xxxx

Example Drawing of Pressure sensor



Special wishes? We deliver customized solutions!

In addition to the standard temperature sensors listed, we can also offer you customized specific solutions. Simply contact us with your requirements via the adjacent button:

MOTOMETER

MOTOMETER GmbH

Fritz-Neuert-Straße 27 | 75181 Pforzheim/Germany

Phone +49 7231 42909-300 | Fax +49 7231 42909-305

E-Mail info@motometer.de | www.motometer.de



SENSORS: Pressure sensor

1-pin grounded

Pressure range	Thread	Connection	Part No.
0 - 5 bar	M10 x 1k	Knurled nut M4	675 002 1001
0 - 5 bar	M14 x 1,5	Knurled nut M4	675 002 1037
0 - 10 bar	M12 x 1,5	Knurled nut M4	675 002 1003
0 - 10 bar	1/8" - 27 NPTF	Knurled nut M4	675 002 1004
0 - 10 bar	M14 x 1,5	Knurled nut M4	675 002 1012
0 - 25 bar	M10 x 1k	Flat connector A 6,3 x 0,8	675 002 1038

Off-Earth

Pressure range	Thread	Connection	Part No.
0 - 5 bar	M10 x 1k mass-free	Knurled nut M4	675 003 1016
0 - 10 bar	M10 x 1k mass-free	Knurled nut M4	675 003 1008
0 - 10 bar	M14 x 1,5 mass-free	Knurled nut M4	675 003 1010
0 - 25 bar	1/8" - 27 NPTF mass-free	Hexagon nut M4	675 003 1014
0 - 25 bar	M14 x 1,5 mass-free	Hexagon nut M4	675 003 1027



SENSORS: Pressure sensor

Pressure sensor with warning contact (grounded)

The pressure sensor with warning contact is screwed in. If the defined pressure is not reached, an electrical contact is closed, which sends out a warning signal.

Operation is possible with 12 Volt or 24 Volt on-board supply system. The pressure range is between 0 bar and 10 bar; the

warning contact is between 0.25 bar and 5.2 bar, depending on the version.

Compatible with MOTOMETER pressure displays

644 001 xxxx

644 060 xxxx

Pressure range	Warning contact	Thread	Connection	Part No.
0-5 bar	0,25 bar	M18x1,5	A 6,3 x 0,8	675 004 1025
0-5 bar	0,25 bar	M10x1k	Knurled nut M4	675 004 1006
0-5 bar	0,25 bar	M18x1,5	Knurled nut M4	675 004 1051
0-5 bar	0,5 bar	M18 x 1,5	Knurled nut M4	675 004 1003
0-5 bar	0,5 bar	M10x1k	Knurled nut M4	675 004 1005
0-5 bar	0,5 bar	M14 x 1,5	A 6,3 x 0,8	675 004 1050
0-5 bar	0,6 bar	M10x1k	Knurled nut M4	675 004 1009
0-5 bar	0,7 bar	M10x1k	Knurled nut M4	675 004 1007
0-5 bar	0,9 bar	1/8" - 27 NPTF	Knurled nut M4	675 004 1043
0-5 bar	5,2 bar	M10 x 1k	Knurled nut M4	675 004 1001
0-10 bar	0,5 bar	M10 x 1k	Knurled nut M4	675 004 1002
0-10 bar	0,5 bar	M18 x 1,5	Knurled nut M4	675 004 1004
0-10 bar	0,5 bar	M14 x 1,5	Knurled nut M4	675 004 1023
0-10 bar	0,6 bar	M18x1,5	Bayonet	675 004 2002
0-10 bar	0,7 bar	M14 x 1,5	Knurled nut M4	675 004 1024
0-10 bar	0,75 bar	M10 x 1k	A 6,3 x 0,8	675 004 1011
0-10 bar	0,8 bar	1/8" - 27 NPTF	Knurled nut M4	675 004 1038
0-10 bar	0,9 bar	M10 x 1k	Knurled nut M4	675 004 1012
0-10 bar	1,5 bar	M12 x 1,5	Knurled nut M4	675 004 1018
0-10 bar	2,0 bar	M10 x 1k	Knurled nut M4	675 004 1013
0-10 bar	5,2 bar	M12 x 1,5	Bayonet	675 004 2004