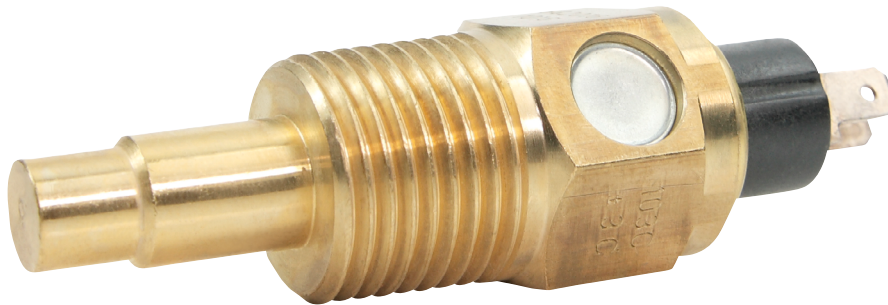




SENSORS: Temperature sensors and switches



Temperature sensor

MOTOMETER temperature sensors have a NTC resistor, that records the temperature of oil, water or air and forwards the measurement result to a temperature display. Brass casings are used, along with a special gel in the sensor housing, for the fast transfer of the detected temperature with little loss.

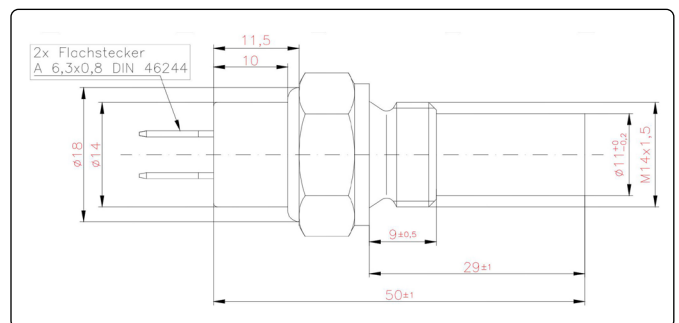
Operation is possible with 12 Volt or 24 Volt on-board supply system. The temperature range is between 40 °C and 120 °C or between 50°C and 150°C, depending on the type.

In addition to the listed standard temperature sensors, we can also offer you customised solutions.

The following temperature sensors are available:

- Temperature sensor (40 °C – 120 °C)
- Temperature sensor (50 °C – 150 °C)
- Temperature sensor with warning contact
- Temperature switch

Example: Drawing temperature sensor



Special wishes? We deliver customized solutions!

In addition to the standard temperature sensors listed, we can also offer you customized specific solutions. Simply contact us with your requirements via the adjacent button:

**Contact us
now**

MOTOMETER

MOTOMETER GmbH

Fritz-Neuert-Straße 27 | 75181 Pforzheim/Germany
Phone +49 7231 42909-300 | **Fax** +49 7231 42909-305
E-Mail info@motometer.de | www.motometer.de



SENSORS: Temperature sensors and switches

Temperature sensors (40 °C – 120 °C)

The resistance characteristic is identical for all sensors

60 °C	134 Ohm
90 °C	51,2 Ohm
100 °C	38,5 Ohm

Compatible with MOTOMETER temperature displays

641 011 xxxx
641 012 xxxx

The sensors are also available unearthed.

Thread	Measuring range	Voltage	Install. depth	Connection		Part No.
M14 x 1,5	40 – 120 °C	6 – 24 Volt	29 mm	Thread M4		642 007 1001
M14 x 1,5	40 – 120 °C	6 – 24 Volt	29 mm	A 6,3 x 0,8		642 007 1006
1/2"-14 NPTF	40 – 120 °C	6 – 24 Volt	29 mm	A 6,3 x 0,8		642 007 1009
M10 x 1 K	40 – 120 °C	6 – 24 Volt	10,5 mm	A 6,3 x 0,8		642 007 1015
M14 x 1,5	40 – 120 °C	6 – 24 Volt	24 mm	Diameter 4mm		642 007 1018
M16 x 1,5	40 – 120 °C	6 – 24 Volt	29 mm	A 6,3 x 0,8		642 007 1021
M14 x 1,5	40 – 120 °C	6 – 24 Volt	29 mm	A 6,3 x 0,8	unearthed	642 011 1001
1/2"-14 NPTF	40 – 120 °C	6 – 24 Volt	29 mm	A 6,3 x 0,8	unearthed	642 011 1004

Temperature sensor (50 °C – 150 °C)

The resistance characteristic is identical for all sensors

60 °C	221,2 Ohm
90 °C	83,0 Ohm
120 °C	36,5 Ohm

Compatible with MOTOMETER temperature displays

641 011 xxxx
641 012 xxxx

The sensors are also available unearthed.

Thread	Measuring range	Voltage	Install. depth	Connection	Connection characteristic	Part No.
M14 x 1,5	50 – 150 °C	6 – 12 Volt	15 mm	A 6,3 x 0,8	vertical	642 009 1002
M14 x 1,5	50 – 150 °C	6 – 24 Volt	30 mm	A 6,3 x 0,8	straight	642 009 1021
3/8"-18 NTPF	50 – 150 °C	6 – 24 Volt	29 mm	A 6,3 x 0,8	straight	642 009 1034
1/2"-14 NTPF	50 – 150 °C	6 – 24 Volt	30 mm	A 6,3 x 0,8	straight	642 009 1019
M14 x 1,5	50 – 150 °C	6 - 12 Volt	30 mm	A 6,3 x 0,8	straight	642 012 1001
1/2"-14 NTPF	50 – 150 °C	6 - 12 Volt	30 mm	A 6,3 x 0,8	straight	642 012 1002

MOTOMETER

MOTOMETER GmbH

Fritz-Neuert-Straße 27 | 75181 Pforzheim/Germany
Phone +49 7231 42909-300 | Fax +49 7231 42909-305
E-Mail info@motometer.de | www.motometer.de



SENSORS: Temperature sensors and switches

Temperature sensor with warning contact

Temperature sensors with a warning contact are used in vehicles and machines to record the temperature of oil, water or air and to forward the measurement result to a temperature display. A warning contact is closed at the same time as a defined temperature is reached.

MOTOMETER temperature sensors with a warning contact

have a NTC resistor, a brass casing and a special gel for rapid temperature transfer with little loss. The pre-tensioned bimetal strips are relaxed when the defined temperature is reached and the contact close. Operation is possible with 12 Volt or 24 Volt on-board supply system. The switching capacity is 3 W.

The resistance characteristic is identical for all sensor

60 °C	134 Ohm
90 °C	51,2 Ohm
100 °C	38,5 Ohm

Compatible with MOTOMETER temperature displays

641 011 xxxx
641 012 xxxx

The sensors are also available unearthed.

Warning contact (+/- 3 °C)	Thread	Measuring range	Connection	Part No.
80 °C	M14 x 1,5	40 – 120 °C	A 6,3 x 0,8	642 016 1001
90 °C	M14 x 1,5	40 – 120 °C	A 6,3 x 0,8	642 016 1002
92 °C	M14 x 1,5	40 – 120 °C	A 6,3 x 0,8	642 016 1003
95 °C	1/2"-14 NPTF	40 – 120 °C	A 6,3 x 0,8	642 016 1015
96 °C	M14 x 1,5	40 – 120 °C	A 6,3 x 0,8	642 016 1005
98 °C	M14 x 1,5	40 – 120 °C	A 6,3 x 0,8	642 016 1006
100 °C	M14 x 1,5	40 – 120 °C	A 6,3 x 0,8	642 016 1007
103 °C	M14 x 1,5	40 – 120 °C	A 6,3 x 0,8	642 016 1008
103 °C	M18 x 1,5	40 – 120 °C	A 6,3 x 0,8	642 016 1025
103 °C	1/2"-14 NPTF	40 – 120 °C	A 6,3 x 0,8	642 016 1016
106 °C	M14 x 1,5	40 – 120 °C	A 6,3 x 0,8	642 016 1009
110 °C	M14 x 1,5	40 – 120 °C	A 6,3 x 0,8	642 016 1010
115 °C	M14 x 1,5	40 – 120 °C	A 6,3 x 0,8	642 016 1012
120 °C	M14 x 1,5	50 - 150° C	A 6,3 x 0,8	642 040 1001
130 °C	M14 x 1,5	50 - 150° C	A 6,3 x 0,8	642 018 1001



SENSORS: Temperature sensors and switches

Temperature switch

Temperature switches are used in vehicles and machines to record the temperature of oil, water or air and to close a warning contact when a defined temperature is reached.

The MOTOMETER temperature switches have pretensioned bimetal strips. The use of brass casings and a special integrated gel allows fast temperature transmission with little loss. When the respective temperature range is reached, the pre-tensioning is released and the contact is closed with a switching capacity of 3 W or 100 W.

Operation is possible with an onboard 12 Volt or 24 Volt mains. The switching contact closes slowly at temperatures of 35 °C to 220 °C.

MOTOMETER temperature switches are also available mass-free.

In addition to the listed standard temperature switches, we can also offer you customised solutions

Warning contact	Thread	Tolerance	Switching capacity	Connection	Feature	Part No.
35 °C	M14 x 1,5	+/- 3 °C	3 W	A 6,3 x 0,8		610 003 1030
55 °C	M14 x 1,5	+/- 3 °C	3 W	A 6,3 x 0,8		610 003 1005
70 °C	M14 x 1,5	+/- 3 °C	3 W	A 6,3 x 0,8		610 003 1007
85 °C	M14 x 1,5	+/- 3 °C	3 W	A 6,3 x 0,8		610 003 1008
90 °C	M14 x 1,5	+/- 3 °C	3 W	A 6,3 x 0,8		610 003 1009
95 °C	M14 x 1,5	+/- 3 °C	3 W	A 6,3 x 0,8		610 003 1012
100 °C	M14 x 1,5	+/- 3 °C	3 W	A 6,3 x 0,8		610 003 1044
103 °C	1/2" - 14 NPTF	+/- 3 °C	3 W	A 6,3 x 0,8		610 003 1045
105 °C	M14 x 1,5	+/- 3 °C	3 W	A 6,3 x 0,8		610 003 1014
55 °C	M14 x 1,5	+/- 3 °C	100 W	A 6,3 x 0,8	Unearthed	610 006 1006
Ein:70 °C	M14 x 1,5	Off=60 °C	100 W	A 6,3 x 0,8	Control switch unearthed	610 004 1006
Ein:82 °C	M18 x 1,5	Off=74 °C	100 W	A 6,3 x 0,8	Control switch unearthed	610 004 1004