

Display your vision

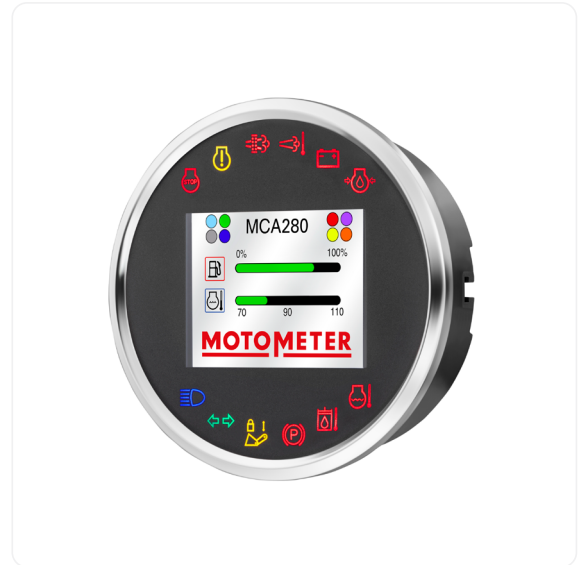
MOTOMETER

MCA 280

Unser MOTOMETER MCA 280

Discover the future of vehicle monitoring with our multifunction display MCA 280. This innovative display solution offers a clear representation of all relevant vehicle data on a high-resolution, scratch-resistant TFT display. With up to 12 LED indicator lights and a variety of display pages, you can customize the display to your requirements.

From alarm notifications to status updates and diagnostic data – the MCA 280 allows for individual adjustment to meet the user's needs. Suitable for various applications including construction machinery, agricultural vehicles, commercial vehicles, special vehicles, municipal vehicles, stationary engines, as well as stationary and mobile work machines.



All essential data about our MCA 280:

CAN Interface

- 1 independent CAN interface supports standard SAE J1939
- CAN interface 2.0B (11-Bit-, 29-Bit-identifier)
- Transfer rate: configurable up to 1 Mbit/s

Input Signals

- 3 analogue inputs (U, I, R)
- 2 frequency inputs
- Up to 16 digital inputs

Output Signals

- 2 digital outputs max. 1,5 A
- 1 voltage output buzzer output max. 25 mA

TFT Display

- Resolution: 240 x 320 px
- Diagonal: 2,8"
- Colour: RGB
- Brightness: 250 cd/m²

Electrical Specifications

- Nominal voltage: 12 Volt / 24 Volt
- Operating voltage: 8 ...32 Volt
- Temperature range: -40 bis +85°C
- Protection: short-circuit, overload and pole protected
- EMV-compatibility: EN 13309; ISO 13766; ECE R10 Rev. 5

Mechanic

- Protection degree: IP67 (front); IP40 (rear)
- Dimensions:
 - Installation aperture 100 mm
 - Installation depth 34 mm
 - Blind overhang 3,2 mm

Contact us now for personalized consultation and place your order for the MCA 280 today!

Our experienced team is ready to assist you with any inquiries and develop customized solutions tailored to your needs.